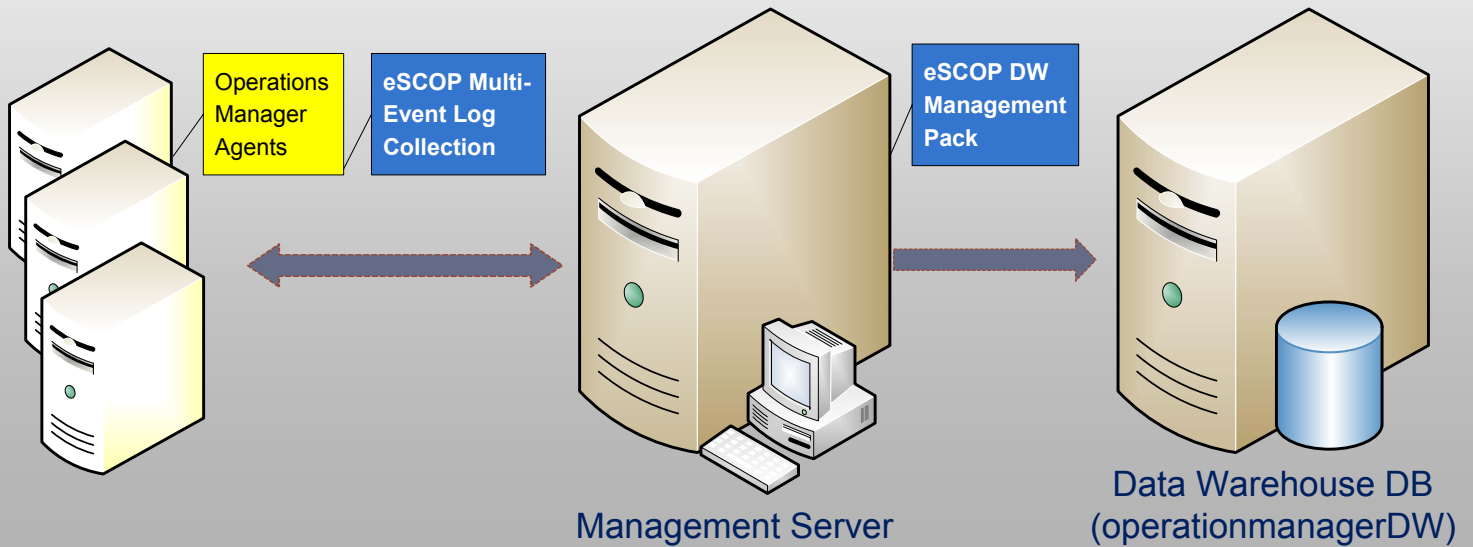


Enterprise System Center Operations Portal

Dynamic Filtering and Rapid Reporting on System Health, Services, Application, WMI and Other Enterprise Events

eSCOP DW Manager

System Center Operations Manager 2007 Data Warehouse MP



eSCOP DW Power

- Extensible Reporting Engine
- Multi-level Filtering of System Health, Services Application and Other Events
- Full Audit Console
- Integration with 3rd Party Management Packs
- Rapidly Local Reporting
- Table/Data Normalization
- No Database Reload thus Reducing Reporting Bottlenecks

eSCOP		
Cached Numbered Data		
Source	Item	Event Logs
	3	System Data
	1	Application Data
	1	Exchange, SQL
	1	Other MPs

The table is connected to eSCOP DB Event Tables via a bidirectional arrow.

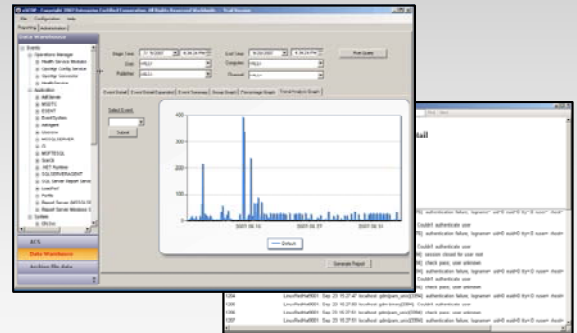


Administrator

Load Current Filter Parameters Based On Real-time Data
Rebuilt Event Data
No Database Reload



eSCOP Console to Filter and Select Reports



eSCOP Local Reports